



# CRUZIANA

GEOPARK NATURTEJO DA MESETA MERIDIONAL-EUROPEAN AND GLOBAL GEOPARK - MONTHLY REPORT

**In this issue:** – New concept of Bikotel fosters Nature Tourism in the Geopark - New website with the Inventory of Portuguese Geosites - Technical visit to Geopark by the LAG Tagus – Students of Idanha-a-Nova meet Segura – Geopark in the International Birdwatching Fair...and more!



Olá/Hola/Ciao/Bonjour/Γειά σου/Hallo/God Dag/Salut/Zdravo/Hello/Ahoj/Helo/Helló/ Hei/  
Dia duit/Bok/Kaixo/Pozdravljeni/Czesc/Halló/Merhaba

## **Geo-stories of our places and people: Medelim**

Dangerous, the crossroads of Medelim to the mountains of Penha Garcia, with the Guard tied to the mines that were growing over there

As Minas de San Francisco (1946) p. 179

Medelim, with an interesting architecture mimicking the granite substrate where is built on, shows the history of the place deeply marked by the mineral wealth, from phosphorites to tin and wolfram. In the scope of the exhibition “When we went for Ore”, research and dialogue on the tangible and memory of mining that has been developed in the municipality of Idanha-a-Nova, an idea comes up to develop a Living Tour across the Mining Memories of Medelim. This itinerary of memories challenges the visitor to meet the environment of the village streets and to contact directly with people that lived the period of “Ore”, when the village was surrounded by mining companies. This is a proposal of former miners, Joaquim Caldeira and Fernando Canilho. The visit may start at N332 or in that multipurpose exhibition place that is the Manor of Medelim, aged from the end of the 16th century and nowadays a 21st century showcase for the village. A “quelha” opposed to the lane of Lameirinho, on the right side of the road, reminds one of the mining concessions developed Medelim. An inscription made in tiles defines the central position of the concession 3031 “Chão de Sampaio” in the well, and that included the whole urban area. This concession was active between 1941 and 1950, owned by Fernando Pires Ribeiro that rented it to the company J. Costa & Martins, Lda. As in many other places in Portugal such pro-Allies company was operating in good neighbourhood with pro-Third Reich mines. From here we follow the indicated lane to the street António Esteves Gaudêncio and to the panel of the beginning of the PR7 Balconies Trail, a footpath of 17 km also interesting for mountain biking that meet the purpose of discover the flat landscape of que Medelim. This well signed footpath will be intersected several times on the way through the characteristic popular architecture of the village. Medelim is the “Village of the Balconies”, rightly known by the people's conservation of the traditional granite architecture of the balconies, being found still 116 outer balconies and 23 inner. Deserves an appreciation as example the House of Ti Parróquia, supposedly being the former Town Hall. The path goes to the street and square of Outeiro, where is located the first of the houses where ore traders lived, the n. 10, the former tavern of José Garoto, crossing the square 25 de Abril. In the street of Ladeira you will find one more place where the “ore business” was made, the house of the smuggler Manuel Trapulha. If you find people in the n. 15, ask for the story, that sometimes will be told in first-hand, or someone will indicate you who may nicely satisfy your curiosity. Coming back to the Street of the Jewry, you will find a remarkable number of houses with balcony from the 16th century, with asymmetric façade, and the House of the Jew restored as a model by the local association ARCAZ. If the door is not open, ask to about the very interesting history of this street to those living there. This street, to which one must associate a story still untold, could place Medelim and the region in the Jewry Cultural Route, a tourism product of high importance nowadays.



**Olá/Hola/Ciao/Bonjour/Γειά σου/Hallo/God Dag/Salut/Zdravo/Hello/Ahoj/Helo/Helló/ Hei/  
Dia duit/Bok/Kaixo/Pozdravljeni/Czesc/Halló/Merhaba**

From the street of Jardim you go straight to the street of Misericórdia until finding the church from the 16th century including the old hospital. Following the street of Tulha you meet a square with several recently restored houses with balcony. By an alley you reach the street Direita from where you see the Mother Church on the other side of the road, with the bell tower independent from the main building, deserving a visit. Following this street you find the “Balcony of Tôco”, with the almost erased sign of Fassio, Ida, one of the companies responsible for the illegal trade of wolfram and tin during the rush of 1941-1943. Meanwhile, you find the corner of the Senior Residence where, in sunny days, we will find Mrs. Maria Ramos in the n. 17A. In this house built with ore money, her father José Ramos Raposo kept a profitable business for many years. If you find her, ask for those times and find through good humor about a period that left deep marks in the oldest memory of the village. If you like to meet History by who made it, visit the seniors residence where you may lastingly chat and listen unbelievable stories. If one of the ladies may not be available for that, look for other: almost everybody lived those times of freedom and prosperity from the tin.

The street follows to the left the old property where the residence is today. Turning to the right you will find some imposing manors from the 19th-begining of 20th century in the square Maria Pires Marques and the street of Deveza, finally reaching the beginning of the Balconies Trail and the end of the itinerary. With available time, making this footpath in both ways, to find some hundred meters far the Sanctuary of the Lord of the Calvary, an excellent viewpoint. Close, next to the road to Penamacor, at Casal da Vinha you will find an old mining shaft. Ask for Vale do Pião, beyond the linear, fault-related Medelim stream, to find the ruins of the houses of the oldest mine in Idanha-a-Nova; climb Serrinha to reveal the granite landform and landscape of superb wideness in the almost perfect flatness of Castelo Branco plateau. If you opt to walk in opposite way, the path lead to the vicinities of the mine houses of the Empresa Portuguesa de Estanhos, with the characteristic yellow painted façade and the label EPEL painted in red, located in the soft slope with view to the granite grandiosity of Monsanto inselberg.

The Village of the Balconies dominates an area of 30,47 km<sup>2</sup> where 272 people live. With a rather weak entrepreneurial dominated by agriculture Medelim is now opening opportunities for tourism, with the development of the first tourism project for lodging and the existing restaurant.



**Olá/Hola/Ciao/Bonjour/Γειά σου/Hallo/God Dag/Salut/Zdravo/Hello/Ahoj/Helo/Helló/ Hei/  
Dia duit/Bok/Kaixo/Pozdravljeni/Czesc/Halló/Merhaba**

Recently the project Jewish and Christian Easter – One celebration, Two cultures was developed as an annual festival that brings closer communities and that can assert by the originality in the Tour of the Jewries. But the persistence of Medelim during the whole year tourism panorama will result only if integrated in the local cultural tourism offer, half the way between the historical villages of Monsanto and Idanha-a-Velha, as well as in cultural routes of national or international scales, such as the Jewries and Jewish Culture Routes. For such purposes, studies are lacking on the role of the Jews in Medelim and a work of conservation, requalification and promotion of the Jewry street is missing.

New richnesses emerge from the substrate of Medelim: recently rocks with blue tourmalines were described in the contact zone with the Penamacor-Monsanto plutonite, considered as gems. Propitiatory of a new future for Medelim? Propiciatória de um novo futuro para Medelim?

Recommended references:

Fernandes, J.M.A. 1946. Estudo das possibilidades de exploração das minas portuguesas de fosforite. Estudos, Notas e Trabalhos do Serviço de Fomento Mineiro, 2(2), 103-107.

Neiva, J.M.C., Queiroz, N.M. & Faria, F.L. 1952. Géologie et genèse des gisements portugais d'apatite. Estudos, Notas e Trabalhos do Serviço de Fomento Mineiro, VIII(1-2): 265-278.

Ramos, P. 2009. Medelim: História e Arte. Junta de Freguesia de Medelim.

Ribeiro da Costa, I., Antunes, I.M., Farinha Ramos, J., Recio, C., Barriga, F., Mourão, C., Guimarães, F. & Ferreira, N. (2013) – Aspectos petrográficos do metamorfismo de contacto associado ao plutão granítico de Penamacor-Monsanto. Comunicações Geológicas, 100(1): 89-98.

Salvado, M.A.N. 2002. A Misericórdia de Medelim – Apontamentos para a sua história. Câmara Municipal de Idanha-a-Nova.

The Editor  
Carlos Neto de Carvalho  
Scientific Coordinator  
Geologist

Front page: (Projecto Objectiva: Geopark, [www.naturtejo.com/objectiva](http://www.naturtejo.com/objectiva))



# ACTIVITIES OF THE MONTH



**February – New website with the Inventory of Portuguese Geosites with scientific relevance.** The Geological Heritage of Portugal has a new website that presents more than 300 geosites of national relevance considering the scientific importance. This inventory was developed by researchers of basically all the Portuguese universities and according to international methodologies promoted by ProGEO (European Association for the Conservation of the Geological Heritage) and by IUGS (International Union for the Geological Sciences). The geosites are included in 25 frameworks which represent basically the geodiversity of Portugal. 12 geosites include the territory of Naturtejo Global Geopark. More information see [www.geossitios.progeo.pt](http://www.geossitios.progeo.pt).



**February – Bikotel: new tourism product to discover the Geopark.** Bikotel is a new concept in Portugal developed by A2Z Adventures for Naturtejo Geopark. This new mountain bike almost 150 km long circuit connects five bike friendly hotels that offer specific amenities to road or mountain bikers. Naturtejo Geopark offers some of the best tracks in Portugal for mountain biking and besides bike circuits it is being develop the concept of Bikotel including already 8 lodging available in the municipalities of Oleiros and Idanha-a-Nova.

**1-2 February – Mazda in the Geopark.** The company Actigeo guided the group of 25 people coming from the Mazda company in Portugal for a guided tour in the Geopark. They visited the Sra. Almortão sanctuary and the historical village of Idanha-a-Velha. They spent the night at Termas de Monfortinho. Next day they were guided across the Ichnological Park of Penha Garcia to find one of the most interesting geosites from Naturtejo Geopark. Not far from this they also visited the Historical Village and national monument of Monsanto.



**3, 6, 10-13, 19 and 24-27 February – Bio- and Geodiversity of the Erges Gorge in Segura for the Primary Schools of Idanha-a-Nova.** Primary schools of Idanha-a-Nova, Ladoeiro and Zebreira were invited to meet the new Biodiversity Interpretative Center “Lands of Idanha” at Segura. 253 pupils and 11 teachers visited the interactive exhibition and walked a small path to Erges riverside to discover Fragas gorge, an area protected under Tejo Internacional Nature Park. Pupils used an exploring questionnaire and a guide of plants identification to find fauna, flora and geodiversity of the area. The initiative was organized by Hugo Oliveira and Manuela Catana, with the support of tourism staff from the municipality of Idanha-a-Nova.

**4-5 February – Two field trips under the “Rivers project”.** Students from Idanha-a-Nova schools are adopting river sections for studying and monitoring. The first sections to be explored were “Várzea-Arraial” and “Sr.ª da Graça – ETAR” in the Ponsul river. 46 students and 2 teachers from the 8th grade of Idanha-a-Nova high school and from the Tourism course of the Professional School of Idanha-a-Nova were guided by the teacher responsible for the project, Arlindo Cardoso, and Hugo Oliveira to make the general analysis of both sections and to take photos.



**6 February – Technical visit to Geopark by the LAG Tagus .** Tagus Local Development Group came for a technical visit to the Geopark. The group included businessmen, decision makers and technicians from three different municipalities from the middle Tejo region and the aim of Tagus was to establish cooperation projects with Naturtejo and to learn how to organize tourism packages. They were welcome by Carlos Neto de Carvalho at Idanhanatura hotel and started the visit in Segura to the new Interpretative Centre “Lands of Idanha”.



After a short look to the Segura gorge geosite and the Mines Trail they moved to Termas de Monfortinho where the CEO of the ô Hotels & Resorts presented the group and the Fonte Santa Hotel. Finally they visited Monsanto by the Boulders Trail and had lunch in the Geo-Restaurant Petiscos & Granitos. The afternoon was spent in the office of Naturtejo in Castelo Branco sharing ideas.



**14-15 February – Seminar on Scenography.** A seminar for 46 students and 2 professors of the Faculty of Architecture of Lisboa was organized in Idanha-a-Nova under the subject “Scenography” held in the Municipal Library. Manuela Catana was responsible for one of the talks, on the Geodiversity and Biodiversity of Naturtejo Geopark centered in Idanha-a-Nova.



**20 February – Ecotourism Conference in Lisbon.** The Landscape Architects Course from the Institute of Agriculture of Lisbon promoted a Conference on Ecotourism. Some innovative projects and companies were presented. Naturtejo Global Geopark was invited as example, and Carlos Neto de Carvalho presented a talk about the Geopark routes.





**25 February – Anim'a Rocha in the Portas de Almourão Geomonument .** The annual project of the Institute S. Tiago together with Naturtejo Global Geopark is dedicated to Portas de Almourão Geomonument. 12 students from the 11th grade and their teacher of Geology and Biology were guided by Manuela Catana in the Foz do Cobre viewpoint and the Secrets of the Mourão valley trail to identify the geodiversity and biodiversity and to understand the geological history of the geosites.



**28 February to 2 March – Geopark in the International Birdwatching Fair.** Once again Naturtejo Geopark was represented in one of the most important birdwatching fairs, FIO, which is organized in the Monfragüe National Park/Biosphere Reserve in Extremadura, Spain. Jorge Costa of the company ActiGeo presented the Geopark packages especially developed for this segment in the stand of the EU project Taejo Internacional where Naturtejo is partner. The Geopark is developing its potential for ornithological tourism structuring the offer based on more than 200 species of birds inventoried in the territory. Some of the most important nesting sites are geomonuments such as Portas de Ródão Natural Monument or Erges gorges. Only very few Portuguese destinations are represented in this international fair.





**28 February – Quinta das Palmeiras high school again in the Geopark .** Every year Quinta das Palmeiras high school from Covilhã visit the geomonuments of Penha Garcia and Monsanto in Naturtejo Geopark. This may be evidence for the good results that schools find in the educational programmes of the Geopark. 64 students and 4 teachers of Geology and Biology from the 10th grade were conducted by Hugo Oliveira and Manuela Catana.



# IMPACT OF GEOPARK IN MEDIA

## TV

11 February (Reconquista TV) – Naturtejo showcases the region in FITUR at Madrid  
24 February (RTP1 national TV – Portugal em Directo news) – Institutions and tour operators want investment in Nature tourism

## Newspapers & www

February (National Geographic Portugal) – Footprints in the SW  
February (National Geographic Portugal) – Looking after the Trails  
February (Land Rover Owner Magazine) – Portugal's Wild Places  
February (EGN Newsletter) – GEOPARKS in ITB Berlin International Trade Show organized by Geopark Naturtejo (Portugal)  
February (Ensino Magazine) – Naturtejo Geopark promotes educational programs  
1 February (Expresso Magazine) – Tours in Naturtejo Geopark  
21 February (Diário do Alentejo) – Once upon a time where elephants existed in the Alentejo beaches



# SCIENTIFIC CONTRIBUTIONS FOR THE GEOPARK AND THE GEOSCIENCES



- Cardozo, J.M. & Neto de Carvalho, C. (eds.) 2013. Geoparks and other approaches for territorial management and tourism in karst areas. *Tourism in Karst Areas*, SeTur/Sociedade Brasileira de Espeleologia, Campinas, 6(1), 73 pp.

- Rodrigues, J. (2013) – Geosite Management in Geopark Naturtejo da Meseta Meridional, Portugal: geomorphological viewpoints. In F. Hobléa, N. Cayla and E. Raynard (eds.), *Managing Geosites in Protected Areas*. Collection Edytem, Université de Savoie, 15: 65-72.

- Teles, V. & Alves, A.C. – Geocaching: Património Geomorfológico e Geoturismo. I Encontro Luso-Brasileiro de Património Geomorfológico e Geoconservação, 5-7 Fevereiro, Universidade de Coimbra, p. 26

- Pereira, D.I., Sá, A., Nunes, J.C., Brilha, J. & Silva, E. – O Património Geomorfológico nos Geoparques Portugueses. I Encontro Luso-Brasileiro de Património Geomorfológico e Geoconservação, 5-7 Fevereiro, Universidade de Coimbra, p. 43



# PROMOTION FOR THE GENERAL PUBLIC

**Newsletter** 01 2014  
European Geoparks Network  
Jan/Jun

**Common activities**

**Welcome to the EGN WEEK 2014!**  
The annual European Geoparks Week 2014 will take place between 24th May and 31st June, in each European Geopark. This festival aims to raise public awareness about themes like geoscientific, geodiversity and geotourism through a variety of activities, including public talks, activity days for schools, guided walks, exhibitions, workshops, concerts, etc. Discover the geoscientific, natural and cultural heritage of European Geoparks and be one of the active participants in EGN Week 2014.

**Education**

**Vulkaneifel Academy: Vulkaneifel Geopark dedicates (Germany) focuses its efforts to environmental education.**  
One of the main concerns of the Vulkaneifel Geopark is to enhance the local population's understanding of their geographical and natural environment. Environmental education is an effective means to increase awareness of a region's natural and cultural heritage. Starting in the autumn of 2013, the newly launched Vulkaneifel Academy presents a series of lectures concerning (geo)scientific topics concerning the Vulkaneifel territory. The nine presentations offer a wide range of themes from regional development, botany and nature conservation to the results of the latest research concerning mass lakes.

**Hateg Country Dinosaurs Geopark (Romania) supports innovation in formal education**  
Hateg Geopark is not just a territory for teaching geology or natural conservation, it is a territory for learning and education - a place where local people, students and tourists are encouraged to discover a cultural heritage in its natural and historic context. Hateg Geopark supports innovation in education creating direct links between universities, local communities and schools in order to contribute to reinforcing local awareness and pride. All the achievements in formal and non-formal education created a solid base for further research and innovation.

**Tourism**

**Geopark Florest Fawr (Wales): The Calch Project digs into our limestone heritage**  
2013 has been a busy year for the CALCH project, which is improving access and providing information for visitors to the limestone quarries on the Black Mountain. Early in the year local volunteers got a chance to discover their inner archaeologists when they helped to excavating some of the lime kilns, which are now being repaired. Over 200 local school children visited the quarries and there have been many other opportunities for local communities to discover their lime heritage. This winter, we will continue developing the quarries as a place where visitors to the Florest Fawr Geopark can discover the fascinating role that making lime has played in the history of Wales. Keep an eye out for news of lots more events in 2014! CALCH is a partnership project between Brecon Beacons National Park Authority, Dyfed Archaeological Trust, the Black Mountain Centre in Brynmawr and Amgueddfa Cymru National Museum Wales. The project is funded by Cadw's Heritage Tourism Project, the Brecon Beacons Trust, the Brecon Beacons Sustainable Development Fund, and the Aggregates Levy Sustainability Fund (Wales). The £15m Heritage Tourism Project is largely funded by the Welsh Government and the European Regional Development Fund. All these funding sources support projects that use heritage assets to bring economic and quality of life benefits to local communities.

**Jornadas do Vinho Callum**  
**OLEIROS**  
auditorio da Casa da Cultura  
12 de abril de 2014 14:30

**PROGRAMA**

14:00 - Recepção dos participantes

14:10 - Sessão de abertura das Jornadas: Dr. Fernando Marques Jorge, Presidente da Câmara Municipal de Oleiros.

14:40 - "A casa Callum": Professor António Ramos, Escola Superior Agrária de Castelo Branco, Instituto Politécnico de Castelo Branco.

15:10 - "A produção do Vinho Callum no Concelho de Oleiros": Eng. Rui Silva, DRAP Centro.

15:20 - "O Vinho Histórico na interpretação da Associação dos Vinhos Históricos de Portugal": Eng. José Vicente Paulo, Presidente da Associação dos Vinhos Históricos de Portugal e Adega Regional de Colares.

15:40 - Debate

15:50 - Momento de degustação do vinho Callum

16:10 - "Vinho Callum um arcabouço vitivinícola que urge reger as gerações futuras": Prof. Doutor Virgílio Lobo, Instituto Superior de Agronomia, Universidade Técnica de Lisboa.

16:40 - Filme promocional "Vinho Alvarinho"

16:50 - "O Vinho Callum como produto de diferenciação e marketing territorial no contexto dos CIGD produtores": Dr. Carlos Neto de Carvalho, Geopark Naturalejo da Meseta Meridional, sob os auspícios da UNESCO.

17:00 - "Estratégia de Branding para o Callum - pelo Agrícola Placemaking": Dr. Paulo Veloso, Agrícola Play Me.

17:30 - Debate Final

18:00 - Encerramento das jornadas

**oleiros**  
**naturtejo**  
**PORTUGAL**  
**INSTITUTO**  
**AGRÍCOLA**  
**PLAY ME**

**TRIP** naturtejo  
**TRAIL** Running  
8-14 JUNHO 2014  
7 DIAS / 6 ETAPAS  
300 KM

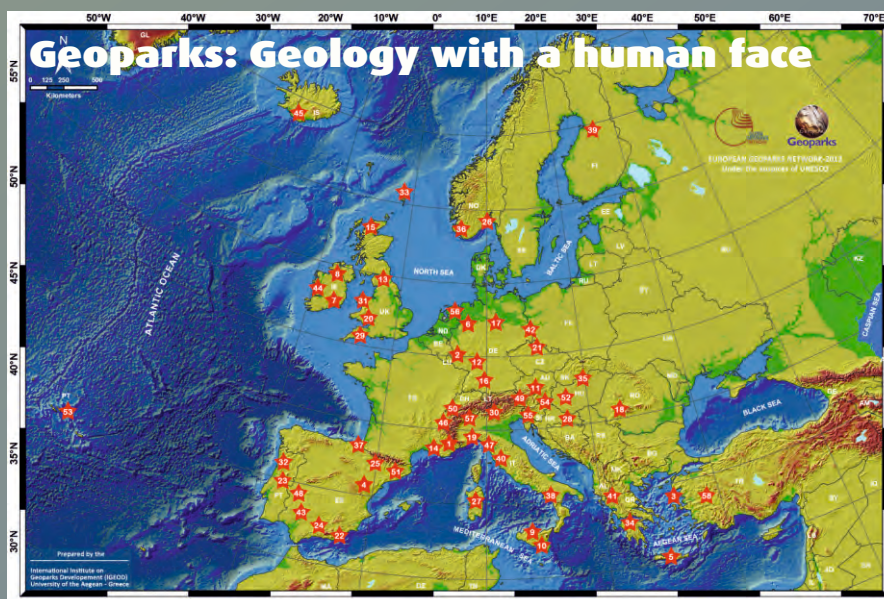
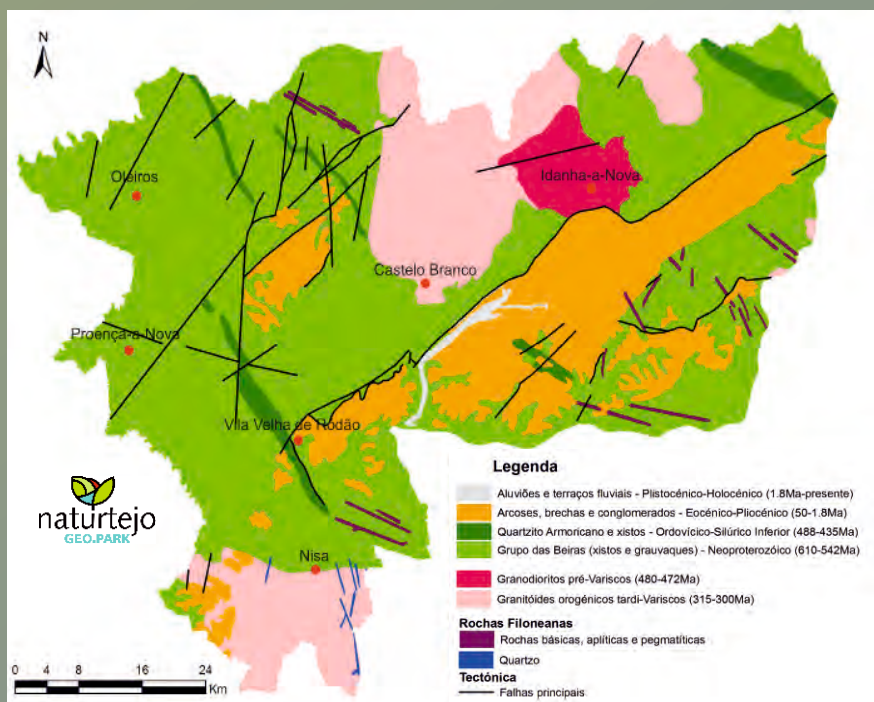
**Horizontes**  
**oleiros**





# PROMOTION FOR THE GENERAL PUBLIC





**CRUZIANA**

GEOPARK NATURTEJO DA MESETA MERIDIONAL-EUROPEAN AND GLOBAL GEOPARK MONTHLY REPORT

[www.geoparknaturtejo.com](http://www.geoparknaturtejo.com)